

DATA SHEET

Highlights

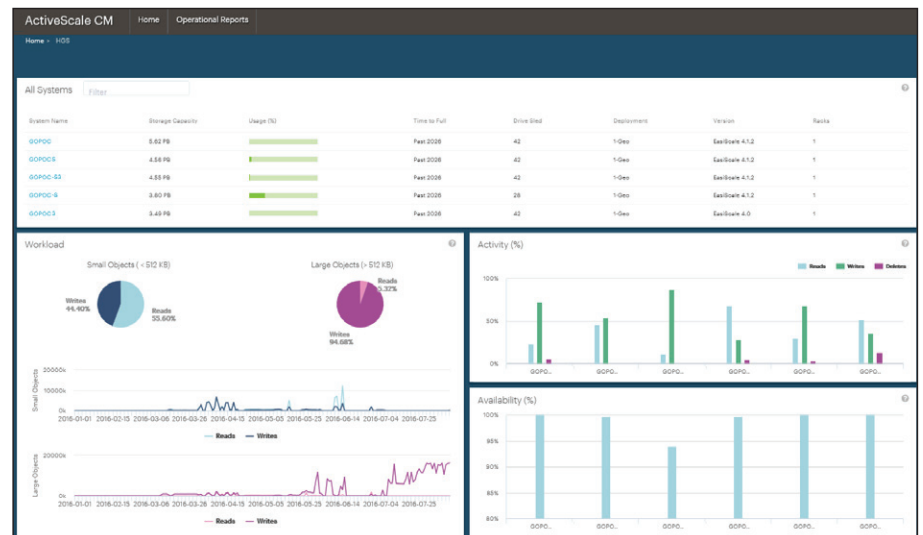
- See all your ActiveScale Systems in one GUI
- System health overview, prescriptive as well as predictive
- System capacity and utilization analytics, including trends and forecasting
- Enhanced experience with proactive support
- Quick support turnaround by eliminating/reducing the need to request log data
- Included as part of your systems support offering

Breakthrough Object Storage Management

ActiveScale™ CM provides cloud-based, advanced system insights and analytics for our object storage systems. Features leveraging Big Data analytics, such as historical trends, capacity modeling, utilization, and forecasting, complement the basic system management functionalities, enabling proactive system maintenance as well as effective management of the ActiveScale Systems across your data centers, regardless of where they're located.

A New Level of Storage Management

A critical characteristic of the object storage systems is large scale. When you're managing petabytes of rapidly growing data in a geographically diverse topology, traditional support structures can't keep up. ActiveScale CM's capability is built with efficient management in mind. Now you can monitor all your ActiveScale Systems from one cloud-based application for quick oversight or detailed information on each system's health, utilization, and analytics. ActiveScale CM also generates operational reports based on system utilization trends such as top users, active buckets, hot objects, and object size histograms, providing a deep understanding of your storage environment.



System Health

Not only can you check the health of your ActiveScale Systems, you can also access trends on an individual rack including forecasting its projected capacity based on current use for efficient budget and data center planning. In addition, you can monitor activity to identify potential performance bottlenecks and take action to keep the system running at top efficiency.

System Support

ActiveScale CM delivers highly efficient support with reduced response time. Our object storage systems can send telemetry (call-home) data from anywhere in the world. When the system sends an alert, you can analyze the data and take action to prevent or minimize downtime for your system.

Strategic Management

The ActiveScale CM advanced system analytics complements the basic system management features available on our object storage systems, providing an ideal solution for managing the volumes of data coming into today's enterprises. System management handles day-to-day operations, and ActiveScale CM provides the capabilities to see trends, anticipate issues and manage resources proactively.

ActiveScale CM provides:

- Forecast and planning capabilities based on current utilization trends
 - Capacity Modeling and Forecast
- Operational Reports
 - System load and load balancing across different data centers
 - Object system characteristics such as object size histogram, data protection overhead, and frequently accessed objects
- Proactive Support
 - Upload system health data, critical logs, and configuration automatically
- Telemetry and Analytics Portal
 - Get insights information via an easy-to-use cloud portal
 - Cloud-based analytics engine enables users to proactively manage their ActiveScale Systems without competing with user IO requests, maximizing productivity
 - Remote monitoring of system health and utilization regardless of system locations
 - Leverages big data analytics to identify system anomalies for proactive management

Information & Technical Support

www.wdc.com/dc-systems

www.wdc.com/dc-support

Western Digital

5601 Great Oaks Parkway
San Jose, CA 95119, USA
US (Toll-Free): 800.801.4618
International: 408.717.6000

www.westerndigital.com
www.contactus.westerndigital.com

© 2016–2018 Western Digital Corporation or its affiliates. Produced 11/16. Rev 06/18. Western Digital, the Western Digital logo, and ActiveScale are registered trademarks or trademarks of Western Digital Corporation or its affiliates in the US and/or other countries. All other marks are the property of their respective owners.